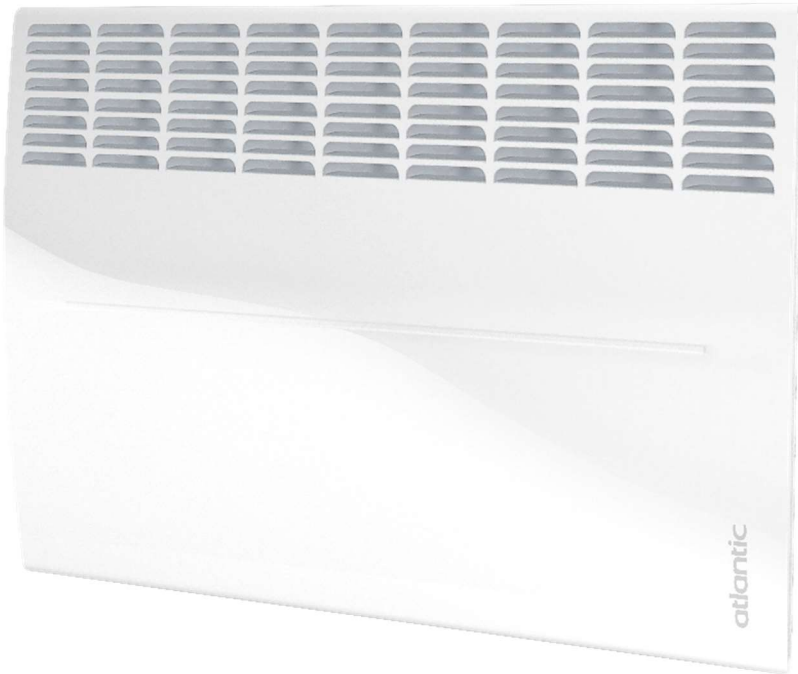


F129 DESIGN



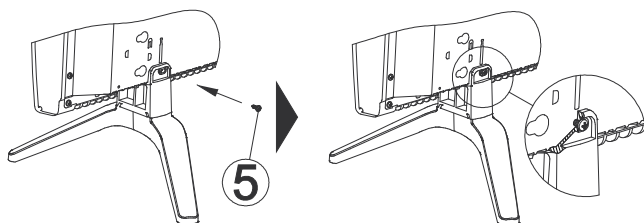
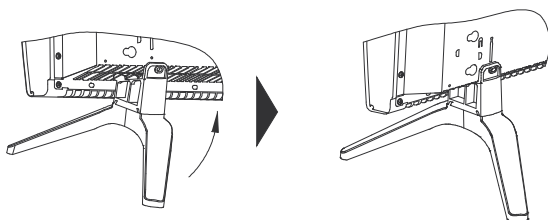
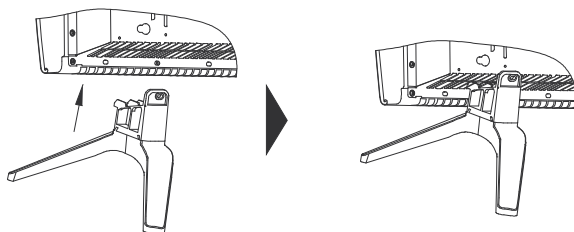
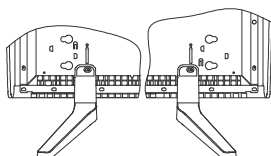
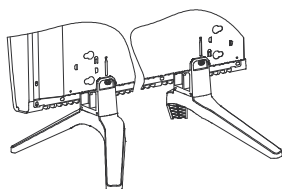
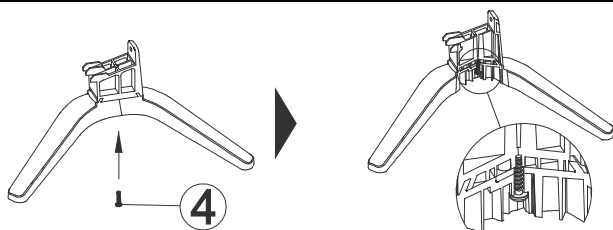
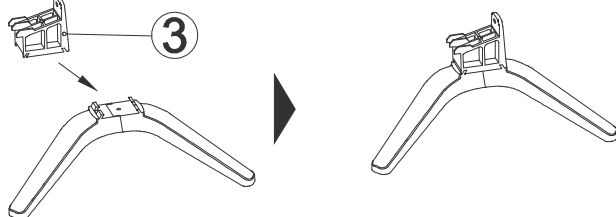
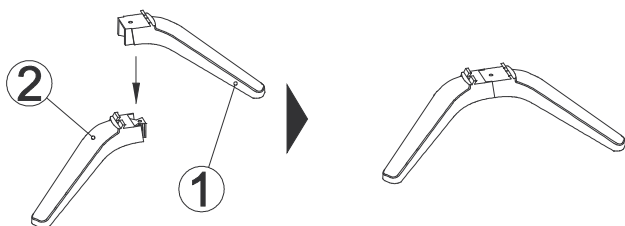
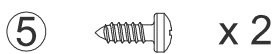
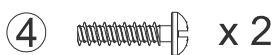
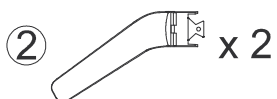
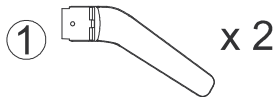
Operating manual

CMG-BD1

U0628726

ELECTRICAL CONVECTOR

This product is only suitable for well insulated spaces or occasional use.



WARNING



Caution, hot surface.

WARNING: Some parts of this product may become very hot and cause burns on contact. Special care must be taken if children and vulnerable adults are present.


- Children under 3 years must be kept away from this appliance, unless they are constantly supervised.
- Children between 3 and 8 years should only put the unit on or off, to provided that the latter has been placed or installed in a normal position and that these children have supervision or have received instructions on using the machine safely and understand the potential hazards. Children aged between 3 and 8 years must not connect or adjust or clean the device and perform maintenance or user.
- This unit can be used by older children at least 8 years and by people with physical, sensory or mental capabilities or lack of experience or knowledge, if they are monitored correctly or instructions for using the appliance safely given to them and if the risks were apprehended. Children should not play with the appliance. Cleaning and maintenance by the user should not be performed by children without supervision.
- This appliance may only be plugged in or connected by an authorized person, according to valid regulations and rules.
- If the power cable is damaged, it should be replaced by the manufacturer, his after-sales department or by a person of similar qualification to avoid any danger.
- The user manual for the appliance is available from the after-sales department, on the number shown on the warranty form included with this manual.
- With the first setting in heating, a light odor can appear corresponding to the evacuation of the possible traces related to the manufacturing of the device.



Caution: For safety reasons, and to avoid overheating, do not cover the heating appliance.



Appliances carrying this symbol must never be disposed of with household waste, but must be collected separately for

	recycling. At the end of their life, products must be collected and recycled according to local regulations and ordinances.
	When an appliance is installed at a higher altitude, the air output temperature rises (around 10°C per 1000 m rise in ground).

In case of use of the device in mobile version:

- Do not use it near a bath-tub, a shower or a swimming pool.
- Do not use this heating appliance near a bath, shower or swimming pool. Do not use this heating appliance in small rooms, when people with limited mobility are present who cannot leave the room unaided, unless constant supervision is provided.

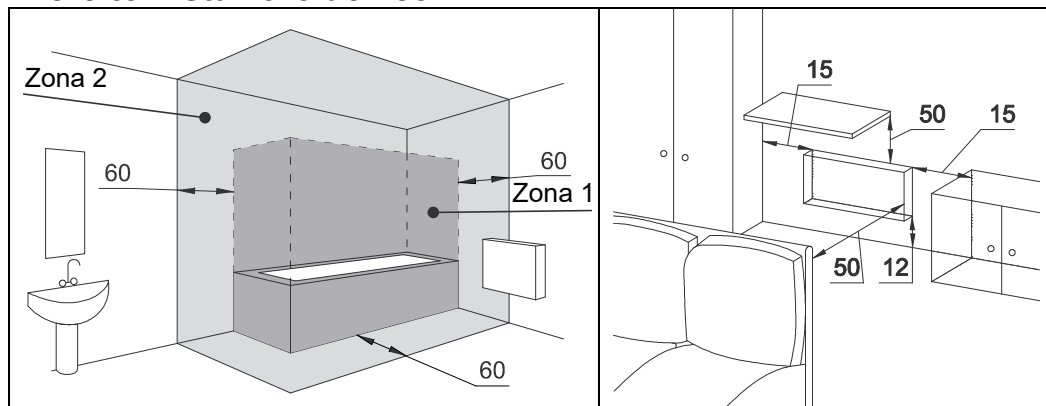
F129 DESIGN WITH ELECTRONIC THERMOSTAT

Atlantic brand founded in 1968 is known for its specialization in heating systems, thermal comfort and energy saving technologies. New F129 Design model purchased by you comes with 40 years of experience and innovations. We hope that our product will fully meet your needs. Thanks for your trust in Atlantic brand!

For more detailed information about all our solutions, please visit our website: www.atlantic-comfort.com

INSTALLATION

Where to install the device?



- This appliance has been designed to be installed in residential premises. Please consult your dealer if other circumstances apply.

- It must be installed in accordance with professional standards, and comply with the regulations in force in the country of installation.

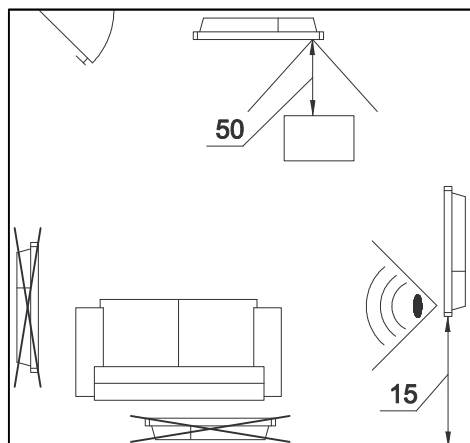
- The appliances are class II and protected from water splashes to IP 24. They may therefore be installed in **zone 2** of shower rooms.

It is forbidden to install the device in **zone 1**. It must be impossible for anyone using the shower or bath to reach the appliance's controls, however.

- Respect minimum distances to obstacles when positioning the appliance.

- The appliance's support bracket allows to maintain a free space behind the appliance so as not to interfere with its adjustment.

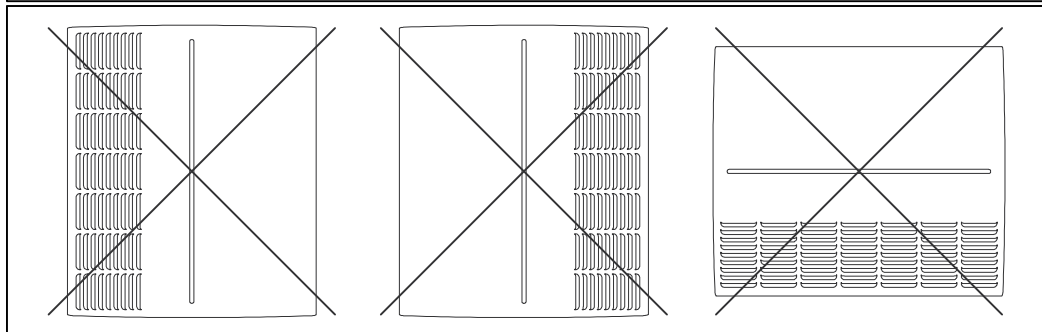
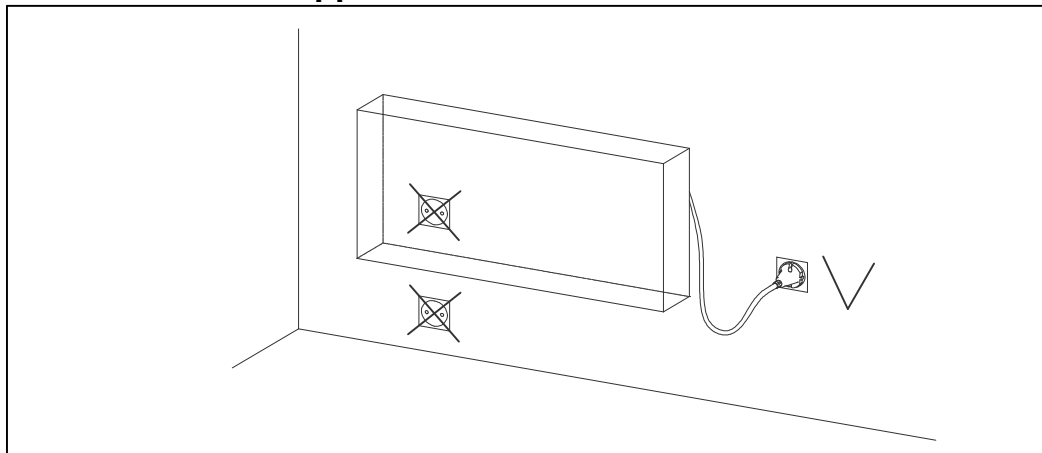
The gap between the appliance and the wall shall not be obstructed in any way. (The dimension are given in centimetres)



For appliances equipped with absence detector:

- To optimize the absence detection of your appliance, avoid installing the device in narrow corner or behind furniture.

Do not install the appliance

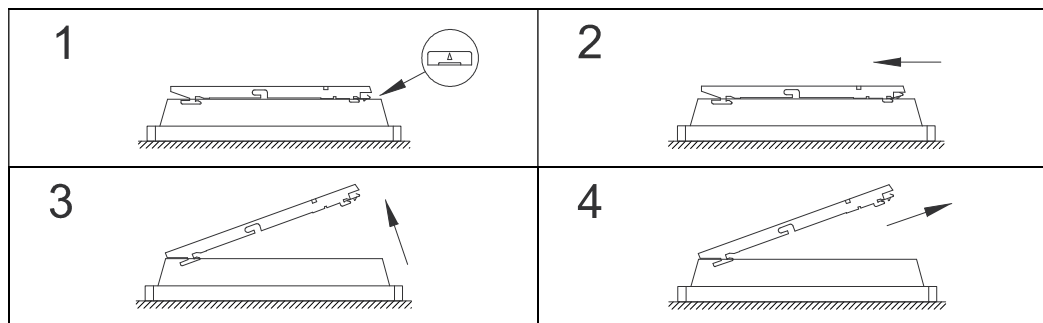


- In a draught that could affect its adjustment (beneath a centrally-controlled mechanical fan unit, etc.).
- Underneath a fixed mains socket or near curtains or any other flammable materials.
- The air outlet grid and control unit must be visible at the top of the appliance. It is forbidden to mount a vertical device horizontally and vice versa.

Mobile version

Your model can be installed both in portable (mobile) and fixed version. **CAUTION!** The appliances which are not equipped with plug cannot be used in mobile version.

- The appliance must be placed on a horizontal surface. Please refer to feet kit assembly instruction on page 2 of this booklet or to instructions with feet (ref. 0517300, 0517400).

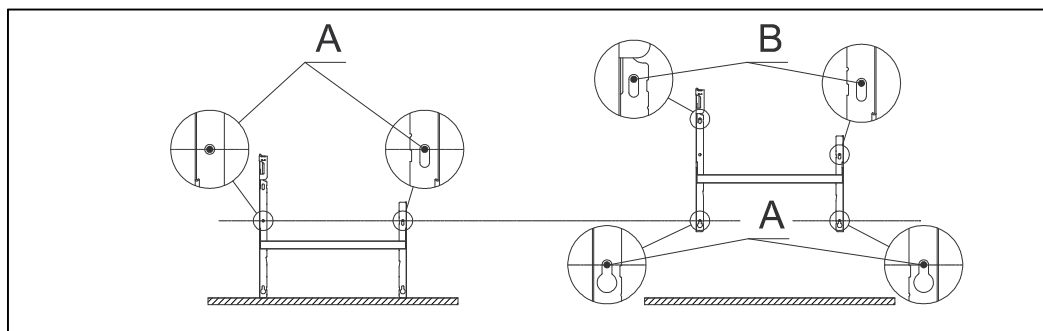


Wall mounting version

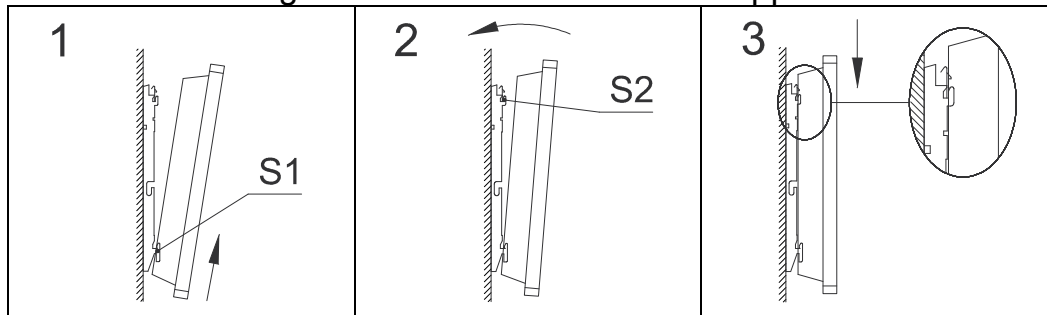
- Release the appliance's latching bar.

We recommend you place the appliance flat on the ground. Use a screwdriver to raise the tongue of the fitting, carefully so as not to distort it. While keeping the tongue raised, push the latching bar downwards to release the latches at the top. Pivot the latching bar around the lower latches. Remove the latching bar.

- Fix the latching bar. Place the latching bar on the floor against the wall. Locate the drilling points **A**. These show you where the lower fastenings are. Lift the latching lug, aligning it with the drilling point A to locate the drilling points **B**. These show you where the upper fastenings are. Drill the four holes, and insert the plugs. If extra support is needed, use special plugs (e.g.: in plasterboard). Position the latching bar and screw in place.



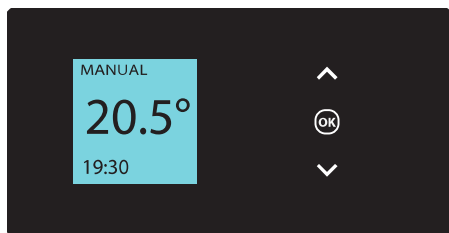
- Lock the appliance onto latching bar. Place the appliance at an angle on the supports **S1**. Pivot the appliance to place it on the supports **S2**. Lower the appliance onto latching bar. The appliance clicks in place, showing it is fixed and latched. To release the appliance from the latching bar, use a flat-head screwdriver and push the tongue (top left of the latching bar behind the appliance) towards the wall. Lift the appliance while holding the tongue with the screwdriver. Swing it forward then lift it off the supports **S1**.



Electric connection

- The power supply to the appliance is 220-240V, 50Hz/60Hz.
- In damp atmospheres, such as bathrooms and kitchens, the junction box must be located at least 25 cm from the floor. The appliance's power supply must be connected straight to the mains, after the all-pole cut-off, with a contact opening gap of at least 3mm with no intermediate switch. The appliance must not be earthed.

OPERATING PRINCIPLE



- Increasing and decreasing temperature (7°C to 30°C in Manual Mode only) without further mandatory confirmation
- Navigation through the menu;
- Confirmation;
- Switching off;
- Blocking, unlocking

OPERATING MODES



The appliance has 2 operating modes:

Manual


The appliance constantly maintains the temperature set in the settings.

Prog

The appliance runs an internal program configured for each day of the week. Once the appliance is switched on, the user can set the following adjustment ranges:

Monday, Tuesday, Thursday and Friday, Comfort from 6.00 to 8.00 and from 18.00 to 22.00. Wednesday Comfort from 6.00 to 8.00, from 12.00 to 14.00 and from 18.00 to 22.00. Saturday and Sunday, Comfort from 6.00 to 22.00. The user can change the specified ranges and set up to 3-time ranges in Comfort mode for each day of the week. During execution of these Comfort ranges, the set temperature can be adjusted with  or . Outside the Comfort ranges, the set temperature is the Eco temperature, which can be set in Temp. ECO section (see “Menu in PROG mode” section).

SWITCH




On the back of the appliance's control unit there is On/Off button. Use this switch only when you stop the heating for a long time (out of heating season). To energize the appliance, set the On/Off button into  position. If the appliance is disconnected from the supply voltage, you will have to re-set the date and time when switching on your appliance.

FIRST USE





Select your language, and then date and time. When you switch on the appliance for the first time:

- MANUAL mode will be activated.
- the set temperature will be 20°C.

TURNING THE HEATING ON/OFF




To turn the heating off, press and hold down . Confirm "OFF" command by pressing . To switch the appliance on, press and hold down .

CONTROL LOCK



To prevent changing the settings by children, you can lock the appliance controls by pressing and holding down . Select "Lock"  and confirm by pressing . To unlock the controls, select "Unlock" .

TEMPERATURE SETTING

In MANUAL mode:

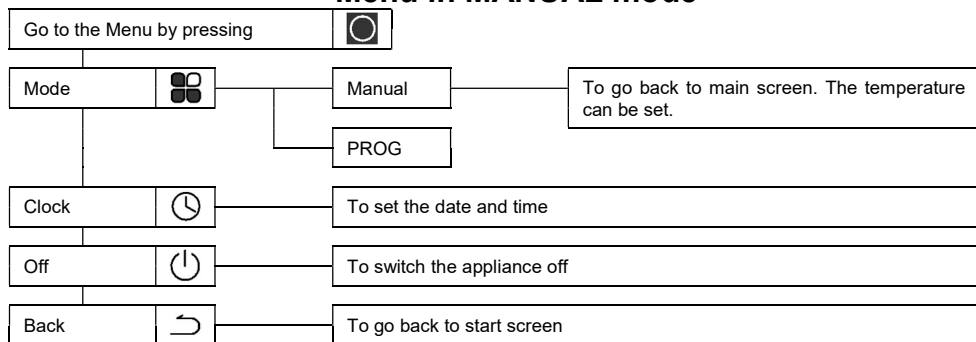
MANUAL 20.0° 19:30	Increase using  (max: 30 °C). Decrease using  (min: 10 °C). Can be decreased additionally to 7°C (anti-freezing temperature, which is unchangeable) using  .
---------------------------------	---

In PROG mode:

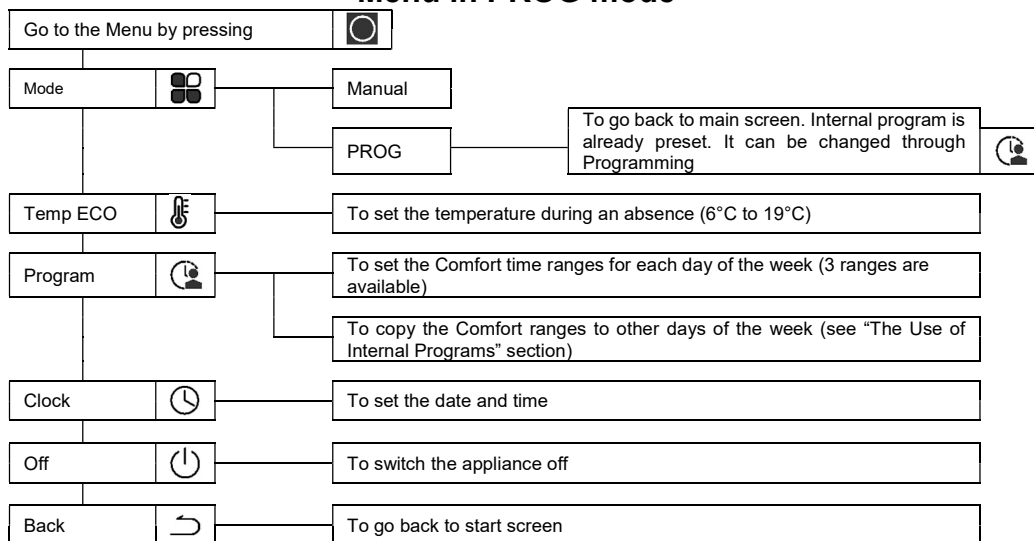
PROG 20.0° 19:30	If the display shows PROG, you can set the programming range in Comfort mode. Increase the temperature using  (max: 30°C). Decrease the temperature using  (min: 10°C).
PROG ECO 16.0° 19:30	If the display shows PROG ECO, you can set the programming range in ECO mode. To change the temperature in ECO mode range, go to Temp. ECO menu (see "Menu in PROG mode" section).
PROG 7.0° 19:30	If the anti-freezing temperature (7°C) is set, then when switching to ECO mode programming range the display will show 6°C (automatic decrease by 1°C).

When returning from ECO programming range to Comfort programming range, the display will show the temperature that was pre-set in Comfort mode, or, if it is the first use, – the temperature set in MANUAL mode.

Menu in MANUAL mode



Menu in PROG mode



THE USE OF INTERNAL PROGRAMS







Anticipation of heating











Your device is equipped with a function that allows your device to anticipate the heating when you use programming. When you set the programming of your device, it will anticipate the heating according to the time of rise in temperature so that your room is at the right temperature when you arrive. For example: if you set your programming with a comfortable return at 15:00, the unit will start before you can anticipate the heating of your room (between 10 minutes and one hour).

How to switch the Programs

Up to 3 Comfort time ranges can be programmed for each day of the week.







Out of Comfort ranges, the setpoint temperature is ECO temperature, which can be adjusted in Temp.ECO section.







Mode			PROG	
Mode			Program	

- Select the day using  . Confirm  .
- Select using  . Confirm  .
- Select the start time using  or . Confirm  . Select the end time using  or . Confirm  .

How to copy the Program



You can copy the program from a certain day to another day(s).

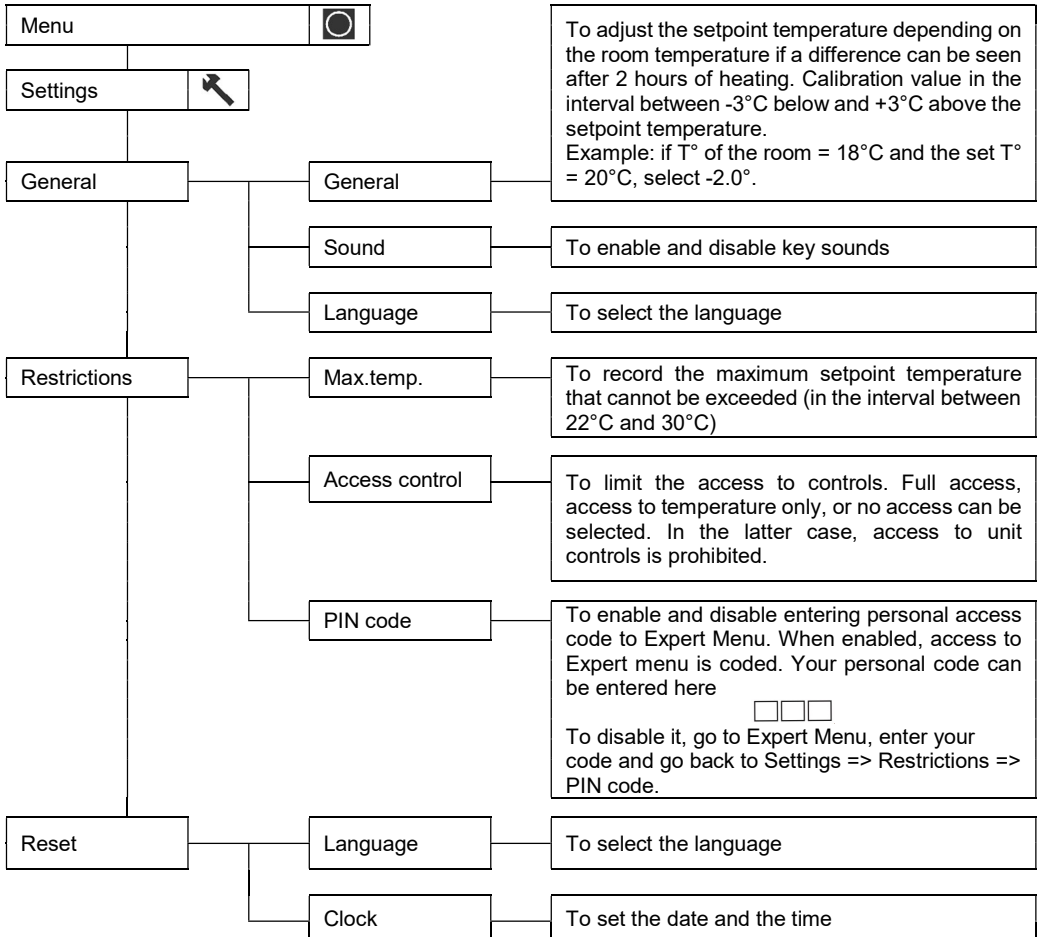
- Select  . Confirm  .
- Scroll through the days using  or .
- Select the day, to which the program is copied using  .
- To confirm the copying, select “Copy”. Confirm  .

Monday			
	Tue		Fri
	Wed		Sat
	Thu		Sun
Copy			

Example: Copying the program from Monday to Tuesday, Thursday, Friday.

Menu EXPERT

To access the advanced features, press simultaneously and hold down  and  for at least 3 seconds.



MODEL SPECIFICATIONS

CMG-BD1

Specification	Symbol	Value	Unit
Heat output			
Rated heat output	P nom	0.5 - 2.5	kW
Minimum heat output	P min	0.0	kW
Long-term maximum heat output	P max, c	2.5.	kW
Auxiliary power consumption			
At the maximum heat output	el max	0.000	kW
At the minimum heat output	el min	0.000	kW
In stand-by mode	el sb	0.29	W
		0.000	kW
Type of heat output/room temperature control			
Specification	Unit	Additional information	
Electronic room temperature control and weekly programmer	Yes		
Other control options			
Room temperature control with user presence sensor	No		
Room temperature control with open window sensor	No		
Remote control option	No		
Adaptive activation control	Yes		
Activation duration limit	No		
Black globe sensor	No		

MAINTENANCE

ATTENTION! All operations are performed only with the device completely de-energized!

- In order to maintain the performance of the appliance, you should use a vacuum cleaner or brush twice a year to remove the dust from the upper and lower grids. Every five years, a maintenance engineer should check the inside of the appliance.

- In a polluted atmosphere, dirty marks could appear on the appliance's grille. This is because of the poor quality of the ambient air. In this case, it is advisable to check that the room is properly ventilated (fan, air intake, etc.) and that the air is clean. Such dirty marks are no reason to have the appliance replaced under the terms of the warranty. The casing of the appliance can be cleaned with a damp cloth, do not use abrasive products.

ATTENTION! The housing protection should never be cleaned with abrasive and aggressive products.

ADVICE FOR USERS

- Putting the appliance at its maximum setting will not increase the temperature faster.
- If you are out for several hours, consider lowering the temperature.
- If you have several appliances in one room, let them operate together, so you have a more uniform temperature while optimizing power consumption. This also applies to an empty room; where it is better to let the appliance run at a lower setting, rather than turn it off completely.

TROUBLESHOOTING

The appliance is not heating: Check that the installation circuit-breakers are engaged. Check the room air temperature. For models fitted with a remote programmer, check it is in COMFORT mode.

The appliance is constantly heating: check the appliance is not in a draught, or whether the temperature setting has been changed.

The surface of the appliance is very hot: It is normal that the convector is hot when operating, it being understood that the surface temperature is limited according to the current standard. However, if you feel that your appliance is still too hot, verify that the power is correct for the surface area of your room (we recommend on average 100 W/m²) and the appliance is not in a draught that would affect its setting.

CONTACTS

ATL International
Tél: (+33)146836001
58 avenue du Général Leclerc
92340 Bourg-la-Reine (FRANCE)

WARRANTY

KEEP THIS DOCUMENT IN A SAFE PLACE

(This certificate should only be produced if you are making a complaint)

- This guarantee is applicable for 7 years from the date of original purchase and upgradable by online registration. Conditions apply.
- Our goods come with guarantees that cannot be excluded under the Australia Consumer Law. You are entitled to a replacement or refund for a major failure and for compensation for any other reasonably foreseeable loss or damage. You are also entitled to have the goods repaired or replaced if the goods fail to be of acceptable quality and failure does not amount to a major failure.

- The benefits provided by this Warranty are in addition to all other rights and remedies in respect of the product which the consumer has under the competition and Consumer Act 2010.

- This guarantee excludes damage by neglect, shipping or accident and any damage due to incorrect installation, use or purposes other than those intended or failure to observe the instructions.

The replacement parts will be supplied free of charge however Atlantic does not accept responsibility for freight, labour charges or losses in transit.

- Atlantic Australasia Pty Ltd reserves the right to reject any warranty claims used in conditions other than domestic purpose or connected to non-approved power boards, extension leads, double adaptors and power boards. All products returned to retail stores for replacement must be pre-approved by Atlantic Australasia.

- Atlantic Australasia Pty Ltd reserves the right to reject any warranty claims used in conditions other than domestic purpose or connected to non-approved power boards, extension leads, double adaptors and power boards. All products returned to retail stores for replacement must be pre-approved by Atlantic Australasia.

- To apply for warranty service, please contact your distributor or installer. If necessary, you can also contact: ATL International: Tél: (+33)146836001, 58 avenue du Général Leclerc 92340 Bourg-la- Reine (FRANCE)

NEW ZEALAND – ATLANTIC AUSTRALASIA – Phone: 0800 422 000

Fax: 04 38 00 509 – Web : www.atlantic.co.nz

Email : sales@atlantic.co.nz

AUSTRALIA – ATLANTIC AUSTRALASIA

4/13-25 Church Street

Hawthorn Victoria 3122 – Australia

Free call : 18 00 67 78 57

Phone : 03 98 52 95 99 – Fax : 03 98 52 98 44

Web : www.atlantics.com.au

Email : sales@atlantics.com.au

FOR WARRANTY EXTENSIONS, please register at :

Australia : www.atlantics.com.au

New Zealand : www.atlantic.co.nz

On the left-side of the product:

A

IP24

Nominal power: 2400W

Nominal voltage: 240V

Dimensions (l x h x t): 925 x 450 x 78

Weight: 6,3 kg

Color:: White

Made in Ukraine

French Technology

Ref: -----

Model: -----

Serial Number: -----

Date of manufacture: -----

Producer: "UKRATLANTIC" LLC

Factory Number: -----

B

C

D

E

F

- A Standards, quality labels
- B Commercial name
- C Commercial reference
- D Manufacturing reference
- E Serial number
- F Manufacturer number

Type of Device	
Serial Number	
Name and address of the customer	
<div style="border: 1px solid black; width: 100%; height: 100%; display: flex; align-items: center; justify-content: center;"> <p style="font-size: 1.2em; margin: 0;">INSTALLER STAMP</p> </div>	