

Vertigo Steatite



Space & energy-saving water heater
with premium flat design



COMFORT

- Space-saving solution suitable for small apartments
- **Premium flat design (less than 30cm depth)**
- **Multiposition installation:** can be both installed vertically and horizontally to fit in the living rooms, bathrooms and kitchens
- **Boost function**:** 1 shower in less than 30 minutes

SAVINGS

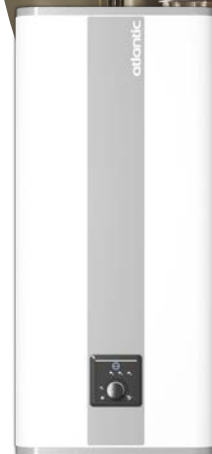
- **Smart control: Smart system for energy savings, learning consumer habits**
- Accurate electronic thermostat and finest temperature control to guarantee safe operating
- High-efficiency water inlet
- CFC-free high-density insulation for increased energy savings





QUALITY - DURABILITY

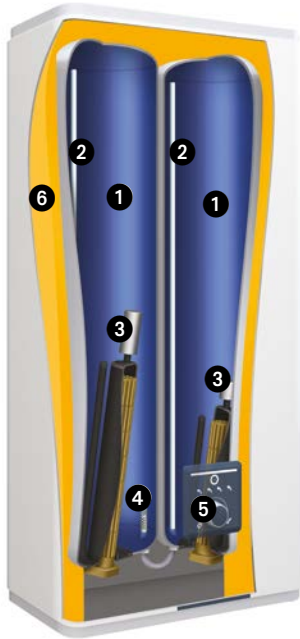
- **Extra lifetime of the heating element** thanks to Double tank Steatite technology: double ceramic dry heating element, adapted to highly mineralized, hard or desalinated water
- Magnesium anode for increased protection of the tank
- New generation Diamond-quality enamel
- Pressure relief valve
- Dielectric union
- Specific lip gasket to avoid rust around flange
- IP 24 - Full compliance with European standards for electrical safety and user protection

USER-FRIENDLINESS

- Intuitive user-friendly interface with quick modes selection knob
- Easy installation with wall mounting plates and drilling template



 <p>A B C D</p> <p>Model available***</p>	<p>ELECTRIC WATER HEATER 25 TO 80L (MULTIPOSITION INSTALLATION)</p> <p>Capacity</p>	 <p>Smart control function Energy savings</p>
 <p>Digital interface</p>	 <p>Dry heating element</p>	<p>MAGNESIUM ANODE</p> <p>Tank protection</p>



- 1 Power light indicator
- 2 Boost mode*: quick heating in order to recover 1 shower in less than 30 min
- 3 Smart shower display showing quantity of hot water remaining (fixed) or being produced (blinking)
- 4 Manual mode: manual selection of hot water quantity
- 5 Frost-free mode (7°C)
- 6 Manual selection (from 50°C to 70°C max)
- 7 Smart mode: automatic operation according to consumer's habits thanks to a self learning program
- 8 Quick mode selection control knob

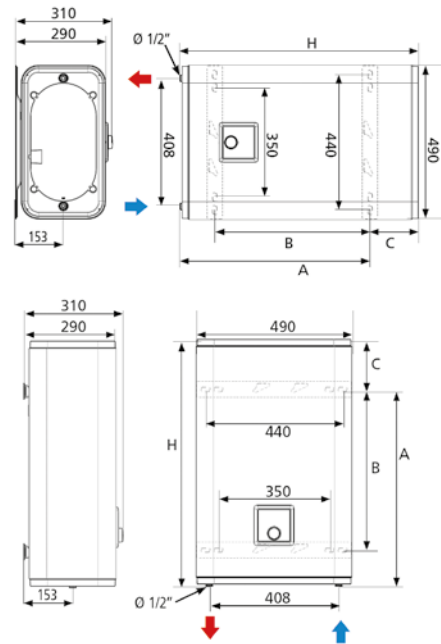
- 1 Diamond-quality enamel
- 2 Optimised stainless steel outlet pipe
- 3 Steatite dry heating element with magnesium anode
- 4 Inlet diffuser
- 5 Digital interface
- 6 High-density polyurethane foam 0 % CFC



Ceramic dry heating element + enamelled steel sleeve. Steatite technology: state-of-the-art ultimate technology for the best long-lasting service



INSTALLATION DIMENSIONS (in mm)



VERTIGO STEATITE Multiposition installation

TECHNICAL DATA

MODEL	REAL CAPACITY (L)	INSTALLATION	MAXIMUM POWER OUTPUT (W)	POWER OUTPUT EXIT TANK (W)	POWER OUTPUT ENTRY TANK (W)	TOTAL HEAT-UP TIME ΔT=50°C	HEAT-UP TIME EXIT TANK (WITHOUT BOOST)
VERTIGO STEATITE 30	25	V/H	1 000	1 000	1 000	1h32	0h46
VERTIGO STEATITE 50	40	V/H	2 250	1 500 + 750	1 000	2h02	0h49
VERTIGO STEATITE 80	65	V/H	2 250	1 500 + 750	1 000	3h19	1h19
VERTIGO STEATITE 100	80	V/H	2 250	1 500 + 750	1 000	4h04	1h38

DIMENSIONS

MODEL	HEIGHT (H)	WIDTH (W)	DEPTH**	DIMENSIONS (mm)				NET WEIGHT (kg)	ERP ENERGY CLASS
				A	B	C	D		
VERTIGO STEATITE 30	601	490	290	440	280	310	155	25	B
VERTIGO STEATITE 50	765	490	290	610	500	310	155	28	B
VERTIGO STEATITE 80	1090	490	290	975	700	310	115	33	B
VERTIGO STEATITE 100	1300	490	290	1185	800	310	115	39	B

* Not available for Vertigo Steatite 30 - ** Without wall plate